

MERCURY



Written by Mike Kenny
Directed by Emma Earle

Relaxed Performance
Mercury Theatre

Wednesday 10th August 2.30pm

Welcome to Mercury Theatre Colchester.

This social story is designed for visitors to the Relaxed Performance of **Alice in Wonderland**.

This contains photos and information about the performance and the Mercury Theatre spaces to help prepare you for your visit.

Where is the show?

The play is being performed at the Mercury Theatre in Colchester.

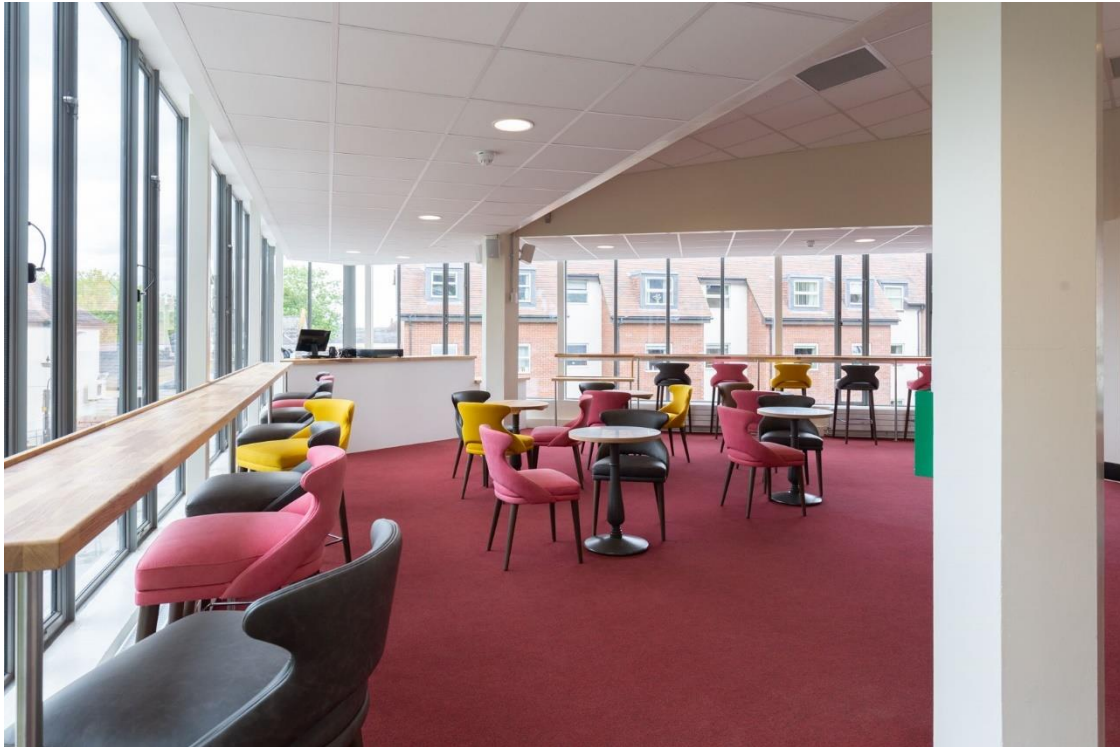


When you enter the theatre you will be able to see our Box Office desk. This is where you can collect your tickets, buy snacks and your programme. It can sometimes be busy at this desk, especially before a performance starts.

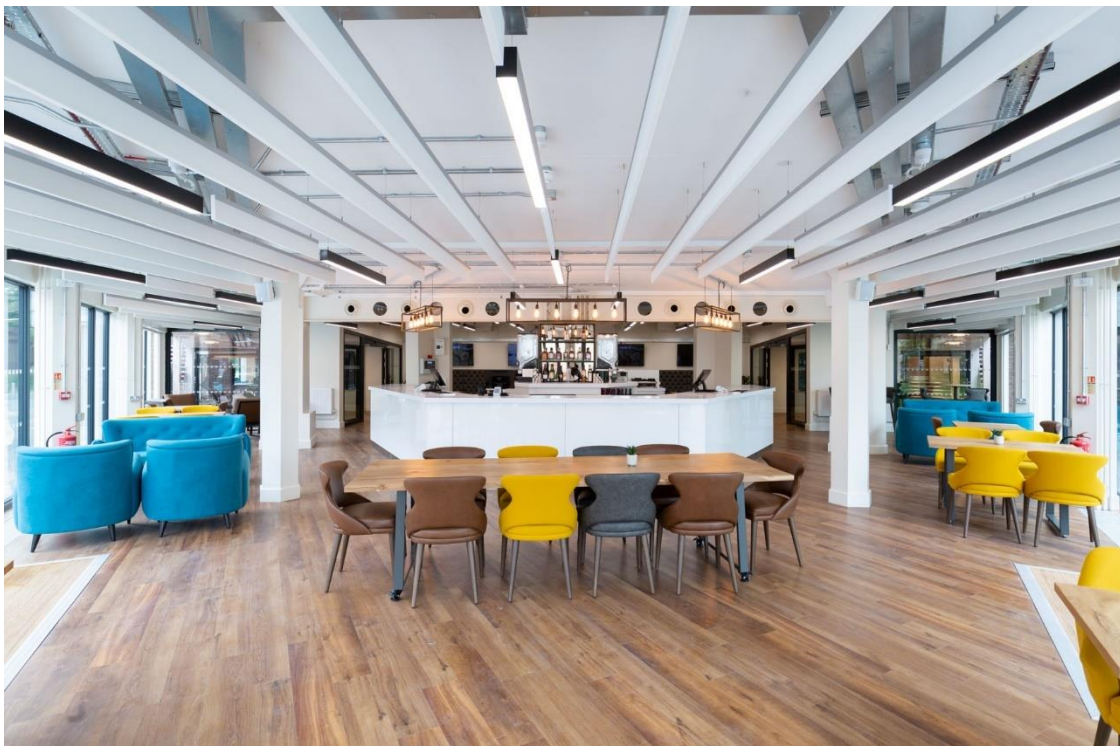


The upstairs bar will be open throughout the show and will be one of our two break out spaces. There is a TV located in the space which will be live streaming the show in case you need to leave the auditorium for a bit. The bar will not be in use and any drinks or snacks will need to be bought downstairs in the main café bar instead. There is also a new accessible toilet in the upstairs bar area.

Upstairs Bar



Downstairs Café Bar



Our second break out space is the creative engagement space – you will not be able to watch the show in this space but you can get away from it all for a bit and there will be cushions, arts and crafts and other items to play and interact with in here on the day.



The main toilets can be located on the ground floor, with the female toilets located just outside the box office and the male and accessible toilet the other side of the café bar. If you have any issues finding these, please alert a member of our Customer Experience team who will be wearing Mercury branded t-shirts.

The show will be taking place in the theatre and you will sit in the auditorium – there are now 530 seats in total.



The actors and the characters they play

During the rehearsal period of Alice in Wonderland, **Ruby Ablett**, who plays **Alice**, fell ill, Therefore **Beth Mabin** has been playing the role instead. While creating this social story, we are unaware which actress will be playing the role of **Alice** for the relaxed performance.

Before the performance, there will be a pre-show talk on stage and during this, it will be made clear which actress will be playing the role of **Alice**.

During the show the cast play a variety of different instruments while singing. Some of those used include guitars, drums, kazoos and a clarinet.

Ruby Ablett playing **Alice**



Beth Mabin playing **Alice**

Dormouse and **Dora** are played by **Miiya Alexandra**



The Caterpillar,
Cheshire Cat and **Carol-Louise** are
played by **Hannah Azuonye**



The Duchess and **Mum** are played by **Rosalind Ford**



The Queen of Hearts and **Ms Head** are played by **Natasha Karp**

White Rabbit and **Mr Buck** are played by **Tom Moores**



Tweedledum (in the yellow costume) and **March Hare** are played by **Loris Scarpa**



Tweedledee (in the blue costume) and **King of Hearts** are played by **Jamie Noar** who is also the **Musical Director**

Mad Hatter and **Harry** are played by **Mike Slader**



How long is Alice in Wonderland?


The performance is split into two halves. The first half, Act One, lasts around 1 hour. Act Two lasts approximately 40 minutes.

In the middle of the performance there is a break, which is also known as an interval, which lasts around 20 minutes. During this time, you can leave the auditorium if you would like to, or you can stay in your seat.

You can leave your seat at any time during the performance as well if you need to.


The Story



We have highlighted any sections which we think you should be aware of, because they may cause discomfort to people who are sensitive to particular stimuli.


 = Visual stimulus


 = Sound stimulus

Act 1

 During the exam scene, the sound of a clock ticking and pencil on paper noises are played in the background. These sounds can be distracting and loud at times during the scene.

  When Alice has landed in Wonderland, the White Rabbit comes out of the middle, right side auditorium door. The White Rabbit talks to the audience from the steps and will then hop back on to the stage. If the White Rabbit talks to you, you do not have to talk back if you do not feel comfortable doing so.

 In the Caucus Race various characters come into the auditorium and run around the stairs. If you are not attending the relaxed performance, large beach balls are thrown into the auditorium during this scene and characters run in between aisles.

 After Alice eats a cake, she begins to grow in size. She continues to grow until a large cardboard cutout of Alice displays on stage (pictured below).



Act 2



Alice comes into the auditorium following the tea party scene. She interacts briefly before going back on stage for the next scene. If Alice talks to you, you do not have to talk back if you do not feel comfortable doing so.



During the court scene, Alice begins to grow and grow and grow. After she has fully grown, large lighting effects take place as Alice is transported back to real life and out of Wonderland. These effects will be less strong for the relaxed performance.

What happens at the end?

At the end of the performance, the audience clap or wave their hands to show that they have enjoyed the performance.

You can clap/wave your hands too, if you would like to. If the clapping is too loud you can cover your ears.

We hope you enjoy your time at the Mercury Theatre!

if you have any questions, please don't hesitate to;

Call us: **01206 245503**

Email us: taking.part@mercurytheatre.co.uk