

# MERCURY



**By Dario Fo**

**Adapted by Deborah McAndrew**

**Directed by Ryan McBryde**

**Relaxed Performance**

**Mercury Theatre**

## **Welcome to Mercury Theatre Colchester.**

This visual story is designed for visitors to the Relaxed Performance of **They Don't Pay? We Won't Pay!**

This visual story contains photos and information about the performance and the Mercury Theatre spaces to help prepare you for your visit.

## Where is the show?

The play is being performed at the Mercury Theatre in Colchester.



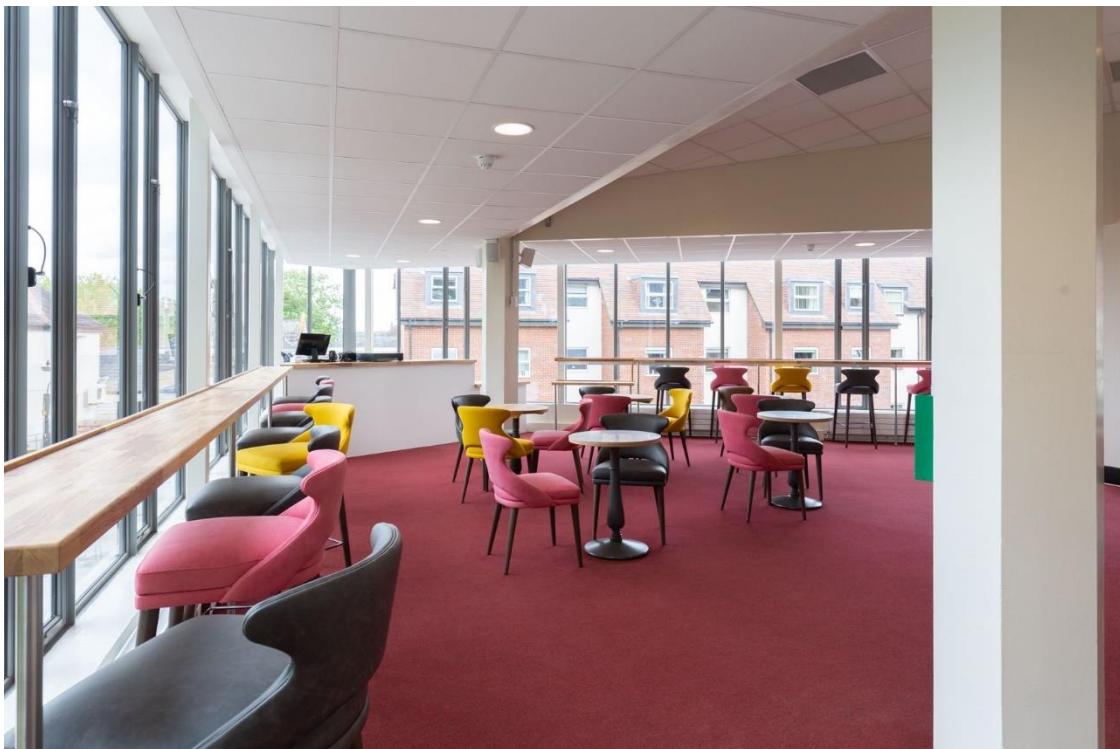
When you enter the theatre, you will be able to see our Box Office desk. This is where you can collect your tickets, buy snacks and your programme. It can sometimes be busy at this desk, especially before a performance starts.



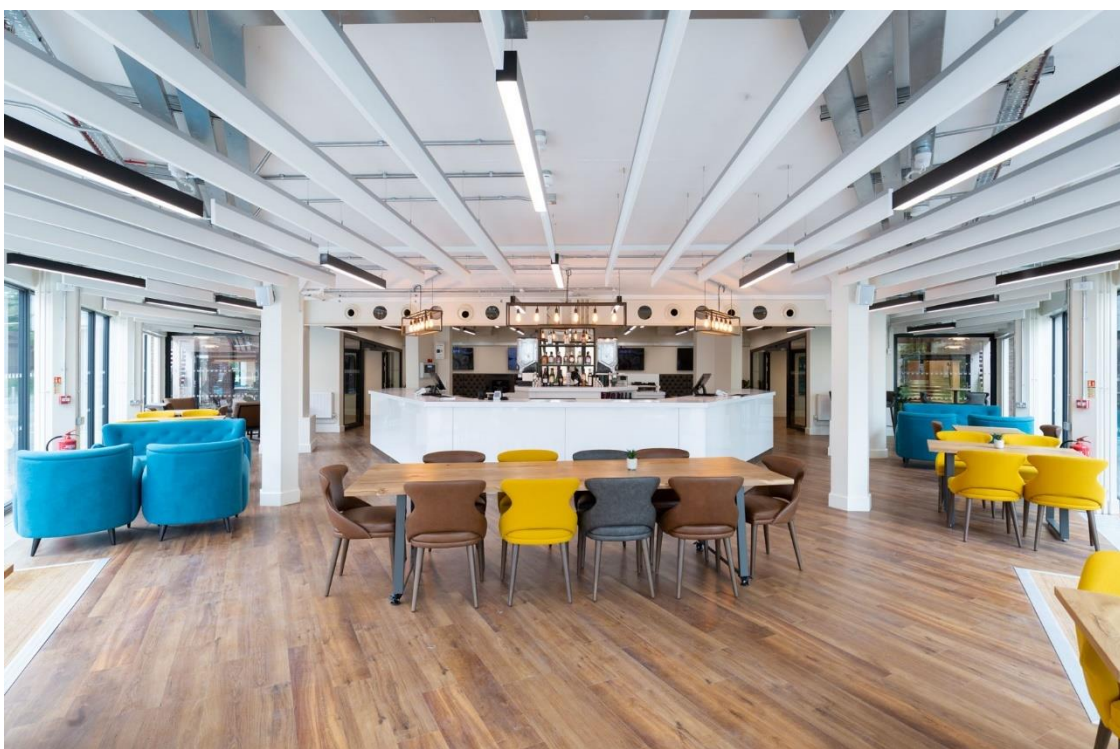
The upstairs bar will be open throughout the show and will be one of our two break out spaces. There is a TV located in the space which will be live streaming the show in case you need to leave the auditorium for a bit!

The bar will not be in use and any drinks or snacks will need to be bought downstairs in the main café bar instead. There is also a new accessible toilet in the upstairs bar area.

### **Upstairs Bar**



### **Downstairs Café Bar**



Our second break out space is the Creative Engagement Space – you will not be able to watch the show in this space but and there will be cushions, mood pillows and other items to play and interact with in here on the day!



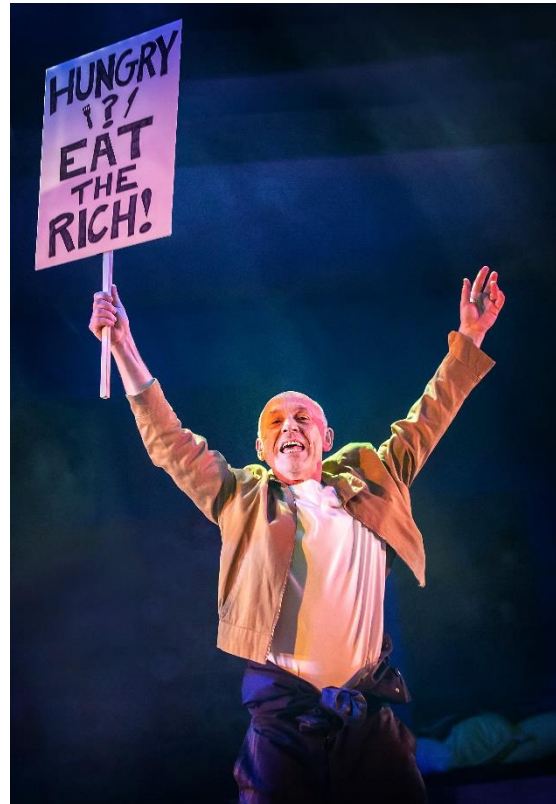
The main toilets can be located on the ground floor, with the female located just outside the box office and the male and accessible toilet the other side of the café bar. If you have any issues finding these, please alert a member of our Customer Experience team who will be wearing Mercury branded t-shirts.

The show will be taking place in the theatre and you will sit in the auditorium – there are 530 seats in total.



**The actors and the characters they play**

**Jack** is  
played by **Joseph Alessi**



**Anthea** is played by **Laura Doddington**

**Maggie**  
is played by **Tesni Kujore**



**Constable/Sergeant/Undertaker/Pops and Postman** are played by **Marc Pickering**



**Lewis** is played by **Jack Shalloo**





## **What happens during ‘They Don’t Pay? We Won’t Pay!’?**

Act 1 is approximately 1 hr and is followed with an interval. The second half is 1 hr.

After the first half there is a break called the interval which lasts around 20 minutes. During this time, you can leave the auditorium if you would like to or you can stay in your seat.

You can leave your seat at any time during the performance as well if you need to.

## **The Story**

We have highlighted any sections which we think you should be aware of in case you are sensitive to particular stimuli or just because we think you should be aware of a particular moment before you see it live on stage.

Some of the props/sounds and lighting effects in the pages below will be played or bought on stage in the pre-show talk. Pre-show talks occur during the Relaxed Performance of They Don’t Pay? We Won’t Pay! at the usual start time of the show.

There will be some tweaks to lighting and sound for the Relaxed Performance and other non-pivitol moments of the show.

 = Visual stimulus

 = Sound stimulus

## Act 1



The music at the beginning of the show is loud, although for the Relaxed Performance all sound will be decreased in volume.



## Act 2



The music at the beginning of Act 2 is loud, although for the Relaxed Performance all sound will be decreased in volume.



The Sergeant uses a klaxon after a van has crashed. The klaxon is loud.




👁️ Lewis and Jack walk through the auditorium, on the right side of the Auditorium, after running away from the Constable with their stolen rice.

👁️ The electric runs out and the lights go out in the flat. After this happens, there is a lot of action that takes place in the dark. After the Constable collapses, a flashlight is used onstage which creates light.



👂 After Anthea gives a speech about wanting practical solutions to solve various everyday problems, the Sergeant comes back onstage with the klaxon and talks through it.

 At the very end of the play, a song is sung by the cast and a choir also take to the stage. The music is loud throughout.



**END OF ACT TWO**

**We hope you enjoyed your time at the Mercury Theatre!**

If you have any questions, please don't hesitate to;

Call us: **01206 577006** and ask to speak to our  
**Creative Engagement team**

Email us: [taking.part@mercurytheatre.co.uk](mailto:taking.part@mercurytheatre.co.uk)