

MERCURY



Written by Emma-Louise Howell

Directed by Hetty Hodgson

Mercury Theatre

Welcome to Mercury Theatre Colchester.

This visual story contains photos and information about **I Really Do Think This Will Change Your Life** and the Mercury Theatre spaces to help prepare you for your visit.

Where is the show?

The play is being performed at the Mercury Theatre in Colchester.



Entering the Theatre



You enter the theatre via the doors above. The doors are automatic and will open in towards the Box Office.

Box Office



When you enter the theatre, you will be able to see our Box Office desk. This is where you can collect your tickets, buy snacks and your programme. It can sometimes be busy at this desk, especially before a performance starts.

Café Bar



In the Café Bar you can purchase drinks, slushies, popcorn and snacks.

It may be very busy here before the performance starts, during the interval and at the end of the performance. If you would prefer a quieter area you can go to the breakout spaces in the upstairs bar or the Creative Engagement space.

Toilets

The main toilets are on the ground floor. The female toilets are located just outside the box office, and the male and accessible toilet are at the opposite side of the café bar.

If you have any issues finding these, please ask a member of our Customer Experience team who will be wearing Mercury branded t-shirts.

Upstairs Bar



The upstairs bar is located on the first floor and will be accessible throughout the show.

There is also a new accessible toilet in the upstairs bar area.

The upstairs bar will not be open so any drinks or snacks will need to be bought downstairs in the main café bar instead.

Studio



The show will be taking place in the Studio Theatre. When you arrive at the Studio Theatre doors, a member of our Customer Experience team will scan your ticket and direct you to your seat.

What happens during I Really Do Think This Will Change Your Life?

The performance is lasts approximately 70 minutes. There isn't an interval during the performance, however each performance will have a relaxed environment. This means that, for access reasons, you can:

Leave and re-enter the Studio



Move around or make noise

Eat or drink during the show

Sunglasses, fidget toys and ear defenders will also be available for every performance – these will be available on a table outside the Studio theatre. If you have any questions about this please speak to a Mercury staff-member.

In addition to this, seats F1 – F4 are designated 'Fidget Seats'. Anyone can sit in these seats, but they are primarily for those who may wish to use their phones during the performance. Devices will need to be on silent, and no photography or filming is permitted.

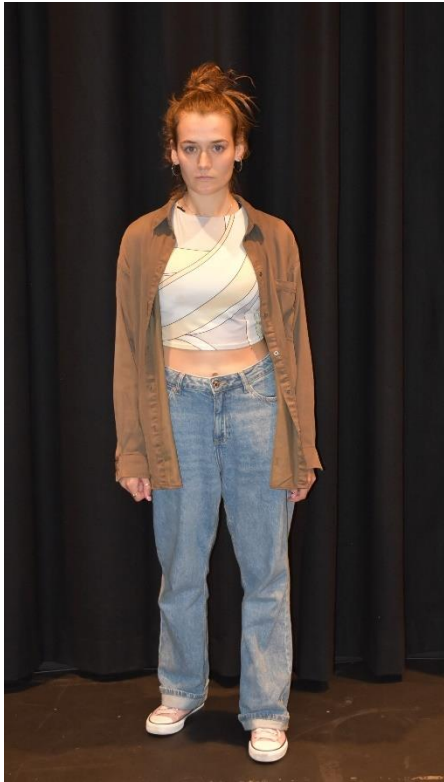
It is important to note that during the performance the Studio will be dark. There will be some flashing lights and loud, sudden noises.

Key	
	<p>Visual stimulus - At various points throughout the performance there are bright, flashing lights. Emojis, memes and creative captioning are used throughout, and these flash up on screens.</p> <p>There is also smoke and haze at the beginning of the performance.</p>
	<p>Sound stimulus - At the beginning, there is heavy bass playing. This may cause some vibration in your seat.</p> <p>The sound levels throughout the performance are loud, and become increasingly so as the performance progresses.</p>

The Actors and the Characters they play:

The characters in *I Really Do Think This Will Change Your Life* are all played by one actor.

When the actor is playing a different character, they may change their accent and costume to indicate that they are playing a different person.



Belles is the main character, and is played by **Emma-Louise Howell**.

Emma-Louise also plays all other characters in the performance.

The Story

I Really Do Think This Will Change Your Life is a Mercury Original, written by Emma-Louise Howell and directed by Hetty Hodgson.

The play tells the story of Belles, who is 24 years old and living at home with her mum. Belles dreams of becoming a millionaire Girl Boss, and when a life-changing opportunity is presented to her, she jumps at the chance.

I Really Do Think This Will Change Your Life explores the lure of multi-level marketing schemes and whether they really are the answer, or if they're just too good to be true.

Key Definitions:

Multilevel Marketing: A form of direct marketing or network marketing. It involves selling directly to customers without going through a retail outlet.

Multilevel marketing also involves individuals (called distributors) recruiting more people to sell products. For each new person they recruit, the distributor receives commission, so it is beneficial to keep recruiting.

For each sale a distributor makes, they receive a percentage amount to keep.

New recruits then become distributors as they recruit more sales representatives, and the network keeps growing.

Sponsor: Someone who recruits other people to become distributors for the business.

Recruits: People who are recruited as distributors.

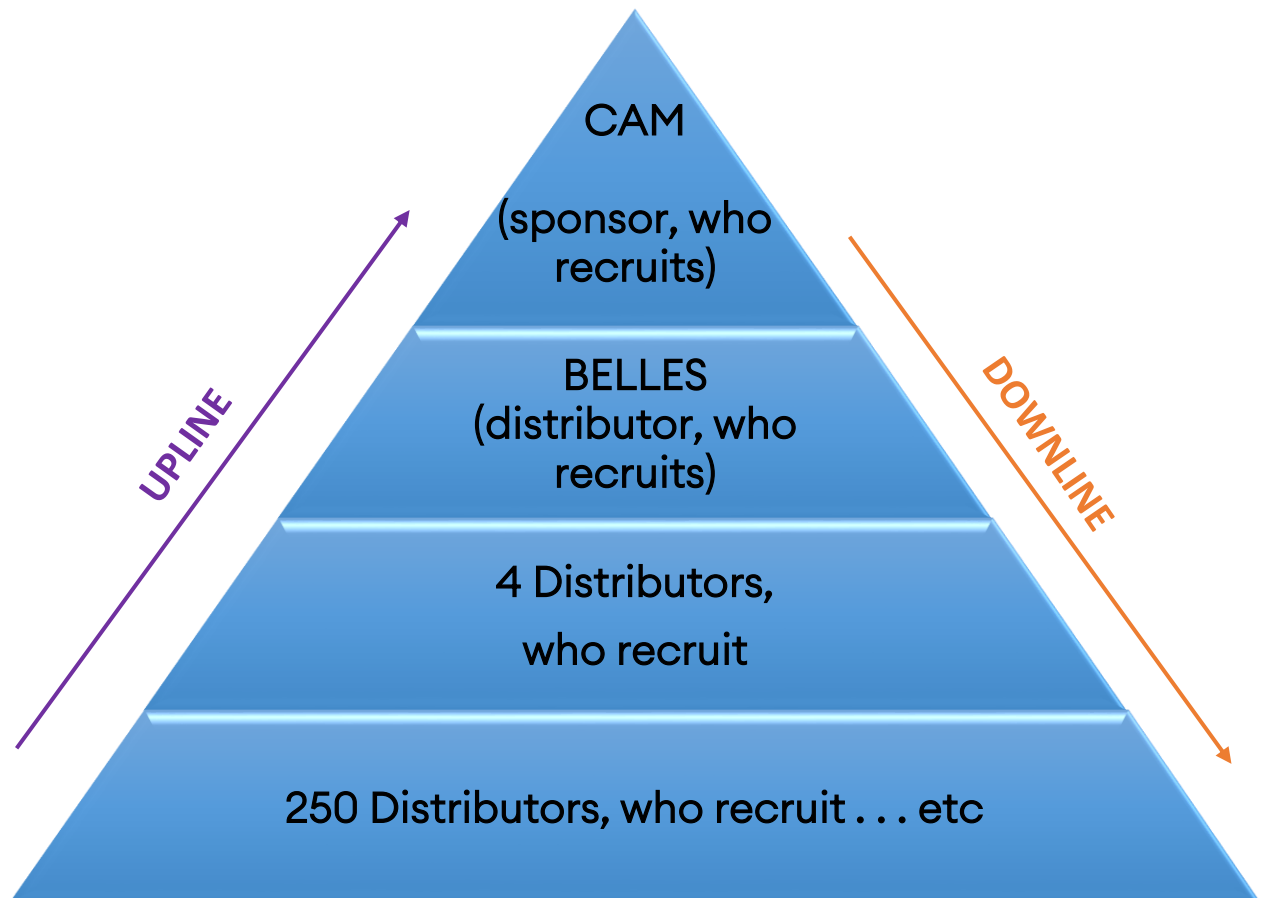
Distributor: People who distribute (sell or promote) the business's products and services.

Downline: People who are 'down' the pyramid, made up of people who are recruited by sponsors and higher-level distributors.

Upline: People who are at the top of the pyramid, e.g. the sponsor. These are people who recruit other distributors.

Personal Retail Sales (PRS): A record of how much the individual distributor has sold.

TYCHE Multilevel Marketing Pyramid:



We hope you enjoyed your time at the Mercury Theatre!

If you have any questions, please don't hesitate to;

Call us on 01206 577006 and ask to speak to our Creative Engagement team

Email us at taking.part@mercurytheatre.co.uk